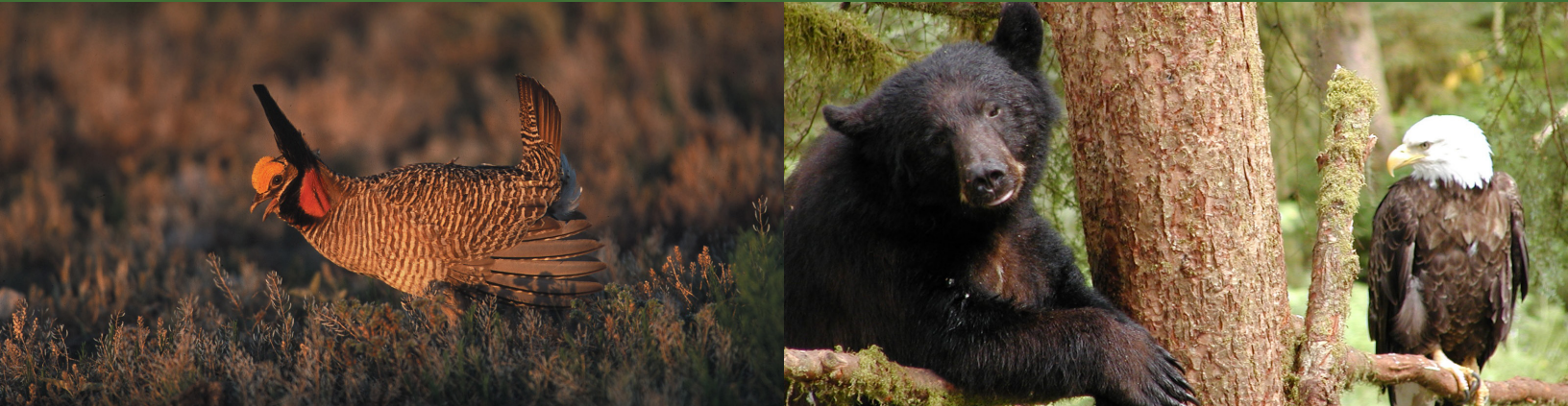


Conservation Reserve Program

STATE ACRES FOR WILDLIFE ENHANCEMENT (SAFE) INITIATIVE

Habitat Restoration | Carbon Sequestration | Water Quality Enhancement



Why Choose CRP? You Benefit. Land, Water and Wildlife Benefit.

The State Acres for Wildlife Enhancement (SAFE) Initiative restores vital habitat in order to meet high-priority state wildlife conservation goals. The Conservation Reserve Program (CRP) provides farmers and landowners with initiatives like this to achieve many farming and conservation goals. Whatever the conservation challenge – soil conservation, water quality protection, or wildlife habitat enhancement – CRP is a proven land performance and management solution.

What are State Acres for Wildlife Enhancements?

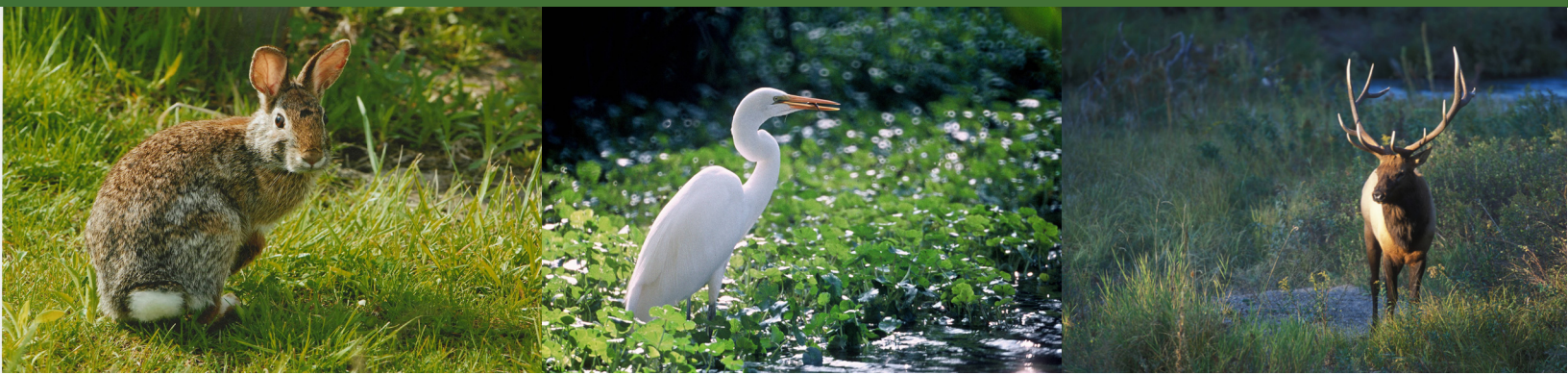
And why are they important?

Through SAFE, landowners re-establish wetlands, grasses, and trees on their land. These practices are designed to enhance important wildlife populations by creating critical habitat and food sources. They also protect soil and water health by working as a barrier to sediment and nutrient run-off before they reach waterways.

Affiliated Practices:

- CP-38A Buffers
- CP-38B Wetlands
- CP-38C Trees
- CP-38D Longleaf Pine
- CP-38E Grass

For more information about these individual practices, visit: <http://www.fsa.usda.gov>



SAFE Initiative Benefits

Species targeted by SAFE include those designated by the U.S. Fish and Wildlife Service as threatened or endangered including the lesser prairie chicken, those that have suffered population decline – like the New England cottontail, bobwhite quail, and grassland birds. SAFE also provides habitat for other wildlife, including deer, game birds such as pheasants, waterfowl, and pollinators that have significant social and economic value.

Financial Benefits

- 10-15 years of annual rental payments
- Payments covering 90% of the eligible costs of establishing the wetland restoration practice
 - 50% from a Cost-Share Payment and
 - 40% from a Practice Incentive Payment (PIP)
- Sign-up Incentive Payment (SIP) up to \$150/acre

Impact

- Enhances populations of high priority species by working with states to identify practices and sites that will have the largest benefit
- Improves native grassland habitats for rare, threatened, endangered, and declining species that are dependent on native prairie communities
- Restores trees, primarily hardwoods, to create habitat that will benefit species such as northern bobwhite quail, the Indiana bat, ducks, and other wildlife
- Promotes carbon sequestration

For more information, contact your local USDA Farm Service Agency: <http://offices.usda.gov>